

Buildex®



NEW

POLY ZIPS®

Fixing polycarbonate roofing to timber & steel battens

Predrills its own expansion hole

Save up to 50% installation time!

-  **Suitable for profile heights 16mm to 29mm**
-  **New ZIPS® drill point for fast and easy fastening into both timber and metal battens up to 1.6mm thick**
-  **Uniquely designed 26mm EPDM washer with inner sealing ring to prevent water entry**
-  **Climaseal® 3 coated that meets real world testing to AS3566 Class 3**
-  **Patent pending wing design drills an over sized hole into the polycarbonate material, eliminates sheet buckling and water entry due to expansion in high temperatures**
-  **Backed by the Buildex Warranty, to match the life of the sheeting**



Gauge	TPI	Length
M6.5 (14g)	14	50mm
Hex Washer Face with 26mm EPDM Seal		
Part No.: 6-030-0316-6CS		

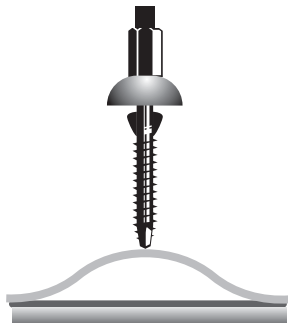
Available in recyclable plastic boxes in quantities of 500

Buildex[®]

POLY ZIPS[®]

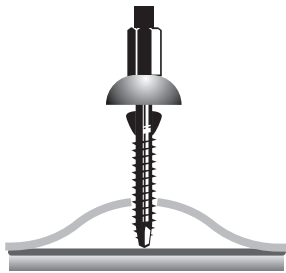
Fixing polycarbonate roofing to timber & steel battens

Installation Instructions



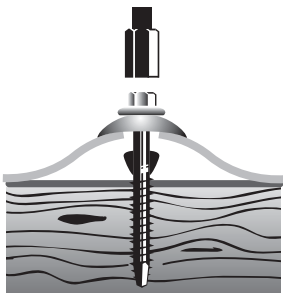
Step 1:

Insert PolyZips[®] into 5/16 socket and carefully position screw in centre of sheet crest to prevent any skidding or scratching.



Step 2:

Using a variable speed screw gun, start drilling slowly keeping screw straight to give you the correct oversized hole in your polycarbonate material.



Step 3:

Keep driving screw until it engages into the batten and EPDM washer sits securely. Do not over tighten screw, as it may cause failure.

PolyZIPS[®] is suitable for fixing into both timber and metal battens up to 1.6mm thick. Some hardwoods may require pre-drilling.

Always check with material supplier recommendations for number of fasteners and spacing's required.



No predrilling required



WARNING:

Always wear safety glasses installing this product.



TW Buildex[®]
A DIVISION OF ITW AUSTRALIA PTY LTD

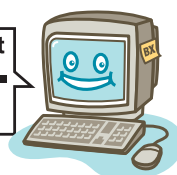
A.C.N. 004 235 063 008
A.B.N. 63 004 235 063 008

600 South Road (PO Box 1154)
Moorabbin, Vic 3189 Australia

www.buildex.com.au



Visit us at
www.buildex.com.au



Technical Help Desk:
Phone : 1300 137 273
Fax : 1800 137 272
Email: technicalhelpdesk@buildex.com.au



90 YEARS MANUFACTURING
IN AUSTRALIA