




# Buildex®

**NEW**

# FIBREGLASS TEKS®

## Fixing fibreglass sheeting to steel purlins

### *Predrills its own expansion hole* Save up to 50% installation time!

-  **Suitable for profile heights 16mm to 29mm fixed to steel purlins from 1.2mm to 2.4mm thick**
-  **Climaseal® 3 coated that meets real world testing to AS3566 Class 3**
-  **Industry approved Weatherlok® washers**
-  **New Teks® drill point for fast and easy fastening**
-  **Patent pending wing design drills an over sized hole into the fibreglass material - eliminates sheet buckling and water entry due to expansion in high temperatures**
-  **M6.5 (14g) screw with a 5/16' drive head for ease of installation**
-  **Backed by the Buildex Warranty, to match the life of the sheeting**



Gauge	TPI	Length
M6.5 (14g)	14	65mm
Hex Washer Face with 32mm Weatherlok® Washer Part No.: 6-310-0607-7CS		

Available in recyclable plastic boxes in quantities of 500

**Buildex**<sup>®</sup>

# FIBREGLASS TEKS<sup>®</sup>

Fixing fibreglass sheeting to steel purlins

## Installation Instructions



### Step 1:

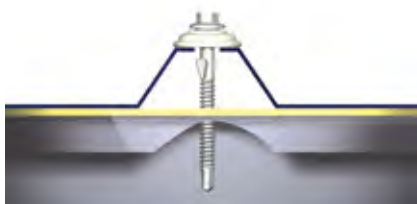
Insert Fibreglass-Teks<sup>®</sup> into 5/16 socket and firmly position screw in centre of sheet crest\* to prevent any skidding or scratching.

*\*Suitable for profile heights 16mm to 29mm*



### Step 2:

Using a variable speed screw gun, start drilling slowly keeping screw straight to give you the correct oversized hole in your fibreglass material



### Step 3:

Keep driving screw until it engages into steel purlin\* and Weatherlok<sup>®</sup> washer sits securely.

Do not over tighten screw.  
*\*Suitable for purlins 1.2mm to 2.4mm thick*



**WARNING:**  
Always wear safety glasses installing this product.



**No predrilling required**



Always check with material supplier recommendations for number of fasteners and spacing's required.

**TW Buildex**<sup>®</sup>  
A DIVISION OF ITW AUSTRALIA PTY LTD

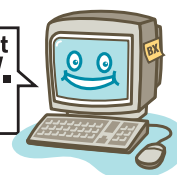
A.C.N. 004 235 063 008  
A.B.N. 63 004 235 063 008

600 South Road (PO Box 1154)  
Moorabbin, Vic 3189 Australia

www.buildex.com.au



Visit us at  
**www.  
buildex.  
.com.au**



Technical Help Desk:  
Phone : 1300 137 273  
Fax : 1800 137 272  
Email: [technicalhelpdesk@buildex.com.au](mailto:technicalhelpdesk@buildex.com.au)



90 YEARS MANUFACTURING  
IN AUSTRALIA